

2018-2020
CATALOGUE



WWW.SQ-ELECTRIC.COM

CIXI CITY
SHIQIONG
ELECTRIC APPLIANCE
CO.,LTD

**CIXI CITY SHIQIONG ELECTRIC
APPLIANCE CO.,LTD**

ADD: ZHANGQI INDUSTRIA ZONE, CIXI, NINGBO, ZHEJIANG
POST CODE: 315313, CHINA
TEL: 0086-63754588
FAX: 0086-63754578
Web: www.shiqiong.com.cn; www.sq-electric.com
Mail: admin@shiqiong.com.cn





Company Profile 慈溪诗琼电器有限公司 CIXI CITY SHIQIONG ELECTRIC APPLIANCE CO., LTD



CIXI CITY SHIQIONG ELECTRIC APPLIANCE CO.,LTD

www.shiqiong.com.cn
www.sq-electric.com



Established in 2013, CIXI CITY SHIQIONG ELECTRIC APPLIANCE CO.,LTD is a professional manufacture and exporter that is concerned with the design development and production of travel adapter, surge protection socket, German type adapter, French type adapter, German type socket, French type socket, night light, extension cords, copper accessories, cable reel and so on. We are located in NINGBO, the west neighbor HANG ZHOU BAY' s oversea bridge and the east adjoin NINGBO port. There are very developed traffic transportation and communication network. All of our products comply with international quality standards and are greatly appreciated in a variety of different markets throughout the world.

Covering an area of 5000 square meters, we now have over 130 employees with humanized but strict management.



Our well-equipped facilities and excellent quality control throughout all stages of production enables us to guarantee total customer satisfaction.

Besides, we have received ISO9001, GS, NF, ROHS, CE, TUV, TUV/INTERETK GS, CCC, VDE, REACH and so on.

As a result of our high quality products and outstanding customer service, we have gained a global sales network reaching Germany, France, Poland, Spain, Romania, Italy, Greece, Belgium, Czech, Holland and so on. The company offer ODM and OEM service. The products are very favorable at home and aboard and deeply received favorable comments from the customer. Welcome sincerely to visit our factory.

We are looking forward to forming successful business relationship with new clients around the world in the near future.

Factory information Overview:

1. Annual turnover : Estimated 2017: 6,500,000 USD; 2016: 5,800,000 USD; 2015: 5,000,000 USD
2. Employees: Over than 130 with 5 professional engineers, 9 QC, 5 production managers, 3 house ware managers, 2 accountants, 5 exporter sales.
3. Capacity per day: 10000pcs normally
4. Lead time: 45-60 days after order confirmation



GERMANY TYPE POWER ADAPTER



SQ-GBK-01/01B
Single adapter with 2 pole switch
Data: 16A 250V~ MAX. 3500W
GS ✓
RoHS ✓



SQ-GBK01/01A
Single adapter with 1 pole switch
Data: 16A 250V~ MAX. 3500W
CE ✓
RoHS ✓



SQ-GB-01/01-2
3 way adapter
Data: 1X16A+2X2.5A
250V~ MAX. 3500W
TUV ✓
RoHS ✓



SQ-GBK-01/01-2
3 way adapter
Data: 1X16A+2X2.5A
250V~ MAX. 3500W
TUV ✓
RoHS ✓



SQ-BZBK-01/01-2
3 way adapter with 1 pole switch
Data: 1X16A+2X2.5A
250V~ MAX. 3500W
CE ✓
RoHS ✓



SQ-FZBK-01/01
3 way adapter with 2 pole switch
Data: 1X16A+2X2.5A
250V~ MAX. 3500W
TUV ✓
RoHS ✓



SQ-GZB-01/03B
3 way adapter
Data: 3X16A 250V~ MAX. 3500W
CE ✓
RoHS ✓



SQ-GZBK-01/03
3 way adapter with 2 pole switch
Data: 3X16A 250V~ MAX. 3500W
CE ✓
RoHS ✓



SQ-GB-01/03T
3 way adapter
Data: 16A 250V~ MAX. 3500W
PC material
CE ✓
RoHS ✓



SQ-GBK-01/03T
3 way adapter with 1 pole switch
Data: 16A 250V~ MAX. 3500W
CE ✓
RoHS ✓



SQ-GZB-01/02
2 way adapter
Data: 2X16A 250V~ MAX. 3500W
CE ✓
RoHS ✓



SQ-GBK-01/02
2 way adapter with 1 pole switch
Data: 2X16A 250V~ MAX. 3500W
CE ✓
RoHS ✓

GERMANY TYPE POWER ADAPTER



SQ-ZDB01/2
2 way adapter
Data: 2X2.5A 250V~ MAX. 3500W
TUV ✓
RoHS ✓



SQ-ZDB01/3
3 way adapter
Data: 3X2.5A 250V~ MAX. 3500W
TUV ✓
RoHS ✓



SQ-FZB-01/4
4 way adapter
Data: 4X2.5A 250V~ MAX. 3500W
TUV ✓
RoHS ✓



SQ-FZB-01/4
4 way adapter with 2 pole switch
Data: 4X2.5A 250V~ MAX. 3500W
TUV ✓
RoHS ✓



SQ-GB-01/02T
2 way adapter
Data: 16A 250V~ MAX. 3500W
PC material
CE ✓
RoHS ✓



SQ-GZB-01/02D
2 way adapter
Data: 16A 250V~ MAX. 3500W
CE ✓
RoHS ✓



SQ-GZB-01/03D
3 way adapter
Data: 16A 250V~ MAX. 3500W
CE ✓
RoHS ✓



SQ-GZB-01/03A
3 way adapter
Data: 3X16A 250V~ MAX. 3500W
CE ✓
RoHS ✓



SQ-GBKS04
1 way adapter with surge
protection and indicator light
Data: 16A 250V~ MAX. 3500W
GS ✓
RoHS ✓



SQ-GBKS03
1 way adapter with surge protection
and 2 pole switch
Data: 16A 250V~ MAX. 3500W
GS ✓
CE ✓
RoHS ✓



SQ-GZB-01/02Y
2 way adapter
Data: 16A 250V~ MAX. 3500W
CE ✓
RoHS ✓



SQ-GZB-01/03C
3 way adapter
Data: 3*16A 250V~ MAX. 3500W
CE ✓
RoHS ✓

GERMANY TYPE SOCKET



SQ-GB03
3 ways socket, without switch
With children protection
Cable: H05VV-F, 3G1.5mm² or 1.0mm²



SQ-GB03K
3 ways socket, with switch
With children protection
Cable: H05VV-F, 3G1.5mm² or 1.0mm²



SQ-GB04
4 ways socket, without switch
With children protection
Cable: H05VV-F, 3G1.5mm² or 1.0mm²



SQ-GB04K
4 ways socket, with switch
With children protection
Cable: H05VV-F, 3G1.5mm² or 1.0mm²



SQ-GB05
5 ways socket, without switch
With children protection
Cable: H05VV-F, 3G1.5mm² or 1.0mm²



SQ-GB05K
5 ways socket, with switch
With children protection
Cable: H05VV-F, 3G1.5mm² or 1.0mm²



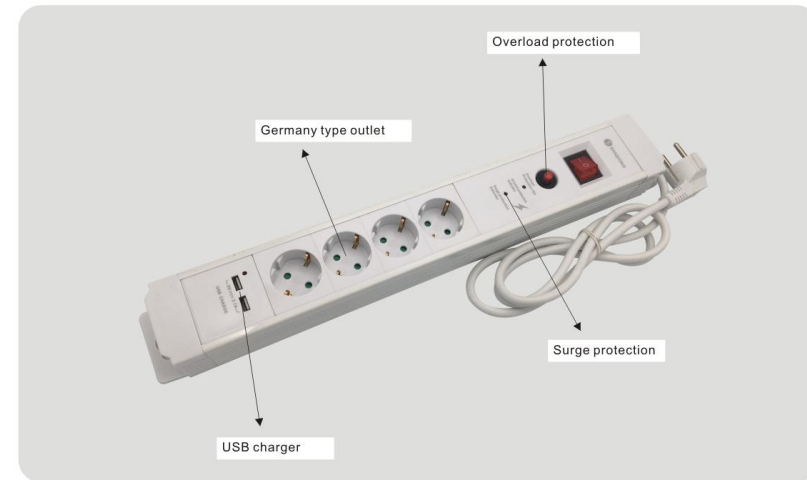
SQ-GB06
6 ways socket, without switch
With children protection
Cable: H05VV-F, 3G1.5mm² or 1.0mm²



SQ-GB06K
6 ways socket, with switch
With children protection
Cable: H05VV-F, 3G1.5mm² or 1.0mm²



MULTI-FUNCTIONAL GERMANY TYPE SOCKET



SQ-GBKDS04U
4 way, with switch, surge protection, overload protection,
2 USB charger, children protection
USB charger: total 2.1A 5V~
PVC material



Chosen by customer:

With/without USB charger
With/without surge protection
With/without overload protection
From 3 ways to 12 ways
Body material: PVC or Aluminum



FRENCH TYPE POWER ADAPTER



SQ-FZB-1/2
2 way adapter without switch
Date: 2X6A
NF CE RoHS



SQ-FZB-1/3
3 way adapter without switch
Date: 3X6A
NF CE RoHS



SQ-FZB-01/2
2 way adapter without switch
Date: 2X6A
NF CE RoHS



SQ-FZB-01/3
3 way adapter without switch
Date: 3X6A
NF CE RoHS



SQ-FZB-01/4
4 way adapter without switch
Date: 4X6A
NF CE RoHS



SQ-FZB-01/03A
3 way Triangular adapter without switch
Date: 3X16A
NF CE RoHS



SQ-FZB-01/01-2
3 way adapter without switch
Date: 1X16A+2X6A
NF CE RoHS



SQ-FZBK-01/01-2
3 way adapter with switch
Date: 1X16A+2X6A
NF CE RoHS



SQ-FZB-01/02
2 way adapter with switch
Date: 2X16A
NF CE RoHS



SQ-FZBK-01/02
2 way adapter with switch
Date: 2X16A
NF CE RoHS

FRENCH TYPE POWER ADAPTER



SQ-FZB-01/02-1
3 way adapter without switch
Date: 2X16A+1X6A
CE RoHS



SQ-FZB-01/03T
3 way adapter without switch
Date: 3X16A
NF CE RoHS



SQ-GZBK-01/01-2
3 way adapter with 1 pole switch
Germany and French type adapter
Date: 1X16A+2X6A (For Spain market: 1X16A+1X10A)
CE RoHS



SQ-FZBK-01/01
Power adapter with two pole switch
Date: 16A
Material: PP plastic
CE RoHS



SQ-FZBKS-01/01
Single adapter with 1 pole switch and surge protection
Date: 1X6A
CE RoHS



SQ-FZBS-01/03
3 way adapter with surge protection
Date: 3X16A
CE RoHS



SQ-SN-2-1
3 way adapter without switch
Date: 2X16A+1X6A
CE RoHS



SQ-BZB-01/01-2
3 way adapter without switch (For Poland and Czech market)
Date: 2X16A+1X6A
CE RoHS



FASHION STYLE FRENCH TYPE SOCKET



SQ-FB03
3 ways socket, without switch
With children protection
Cable: 3G1.5mm² or 3G 1.0mm²
CE RoHS



SQ-FB03K
3 ways socket, with switch
With children protection
Cable: 3G1.5mm² or 3G 1.0mm²
CE RoHS



SQ-FB04
4 ways socket, without switch
With children protection
Cable: 3G1.5mm² or 3G 1.0mm²
CE RoHS



SQ-FB04K
4 ways socket, with switch
With children protection
Cable: 3G1.5mm² or 3G 1.0mm²
CE RoHS



SQ-FB05
5 ways socket, without switch
With children protection
Cable: 3G1.5mm² or 3G 1.0mm²
CE RoHS



SQ-FB05K
5 ways socket, with switch
With children protection
Cable: 3G1.5mm² or 3G 1.0mm²
CE RoHS



SQ-FB06
6 ways socket, without switch
With children protection
Cable: 3G1.5mm² or 3G 1.0mm²
CE RoHS



SQ-FB06K
6 ways socket, with switch
With children protection
Cable: 3G1.5mm² or 3G 1.0mm²
CE RoHS

POWER ADAPTER WITH USB CHARGER



SQ-FZB-01/01-UA
1X16A socket outlet(Germany/ French)
with children protection and
USB charger: total 2.1A 5VDC
GS REACH ROHS CE



SQ-FZB-01/01-UA-1
1X16A socket outlet(Germany/ French)
with children protection and
USB charger: total 2.1A 5VDC
GS REACH ROHS CE



SQ-GZB-01/01-UA
1X16A socket outlet(Germany/ French)
with children protection and
USB charger: total 2.1A 5VDC
GS REACH ROHS CE



SQ-GZB-01/01-UA-1
1X16A socket outlet(Germany/ French)
with children protection and
USB charger: total 2.1A 5VDC
GS REACH ROHS CE

Universal travel adapter



SQ-UL-FR
USA/FRENCH adapter
Data: input:6A 250V~
output:15A 125V~
CE



SQ-FR/GE-01/01
France to German, adapter
Data: 16A 250V~
CE



SQ-SN-131
Detachable French type socket
Data: 16A 250V~
CE



SQ-UK-FR
UK-French type, adapter
Data: 16A 250V~
CE



SQ-GF-UK
French to UK adapter
CE



S05
Uni-polar cord switch
CE

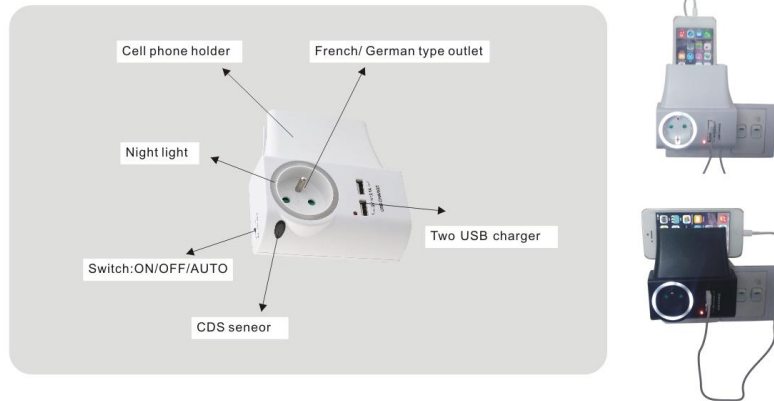


SQ-SN-03
Detachable plug
CE



SQ-FR-UL
France/ USA adapter
Data: input:15A 125V~
output:6A 250V~
CE

SMART-HOME USB CHARGER SERIES



French type	Certification	Germany type	Certification
SQ-FZB-01/01-NUF	CE;ROHS;REACH	SQ-GZB-01/01-NUF	CE;TUV MARK;ROHS;REACH
SQ-FZB-01/01-NU	CE;ROHS;REACH	SQ-GZB-01/01-NU	CE;GS;ROHS;REACH
SQ-FZB-01/01-UF	CE;ROHS;REACH	SQ-GZB-01/01-UF	CE;TUV MARK;ROHS;REACH
SQ-FZB01/01UA	CE;ROHS;REACH	SQ-GZB01/01UA	CE;GS;ROHS;REACH
SQ-FZB01/01UA-1	CE;ROHS;REACH	SQ-GZB01/01UA-1	CE;GS;ROHS;REACH

Germany/French type plug adapter 16A 250V~

With children protection

With earthing contact protection

With USB charging function(input: AC110-230V~50Hz/60Hz; output:5VDC, 2.1A; 2 USB)

With/Without cell phone holder

With/Without Night light around socket-outlet:

1)3 Leds;

2)With day- night sensor control the night light On/off;

3)Light on automatically in dark (light intensity less than 10 lux);



SQ-GZB-01/01-UF SQ-GZB-01/01-NU



SQ-FZB-01/01-NUF SQ-FZB-01/01-NUF SQ-FZB-01/01-NUF SQ-FZB-01/01-NU SQ-GZB-01/01-NUF SQ-GZB-01/01-NUF

FASHION STYLE NIGHT LIGHT WITH PIR AND CDS SENSOR

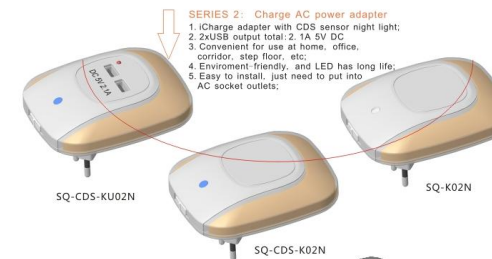
ITEM No.	Certification
SQ-PIR-CDS-K01N	ROHS, CE
SQ-CDS-K01N	ROHS, CE
SQ-K01N	ROHS, CE

Charge AC power adapter

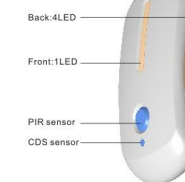
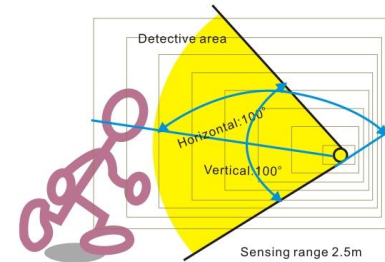
ITEM No.	Certification
SQ-CDS-KU02N	ROHS; CE
SQ-CDS-K02N	ROHS; CE
SQ-K02N	ROHS; CE



- SERIES 1: FASHION STYLE NIGHT LIGHT WITH PIR AND CDS SENSOR**
1. Auto switch on when detecting people coming;
 2. Using CDS sensor, when dark front 1 LED turn on as mood light and when people step in PIR detecting area, automatically back 4
 3. LEDs turn on and after turn off delay;
 4. Environment-friendly, and LED has long life;
 5. Easy to install, just need to put into AC socket outlets;



- SERIES 2: Charge AC power adapter**
1. Charge adapter with CDS sensor night light;
 2. 2xUSB output total: 2.1A 5V DC
 3. Convenient for use at home, office, corridor, step floor, etc;
 4. Environment-friendly, and LED has long life;
 5. Easy to install, just need to put into AC socket outlets;



Lighting Action

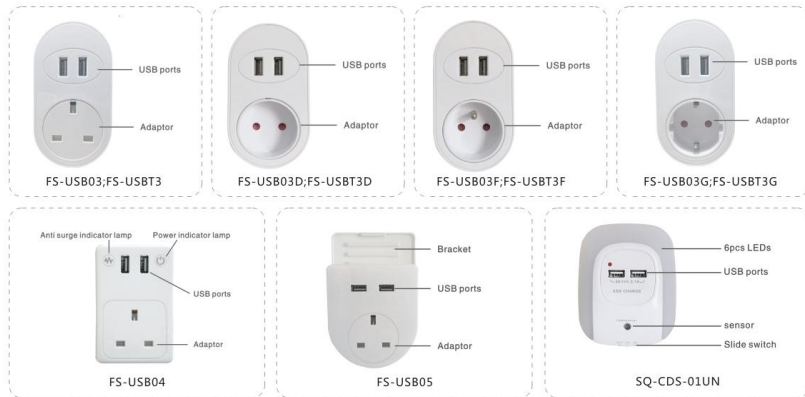
Mode	Night Time		Day Time		Always
Day/Night	-		-		-
Move	☺	☺	☺	☺	☺
Action					
Front 1LED	ON	ON	OFF	OFF	ON
Back 4LEDs	OFF	ON	OFF	OFF	ON

Plug variation

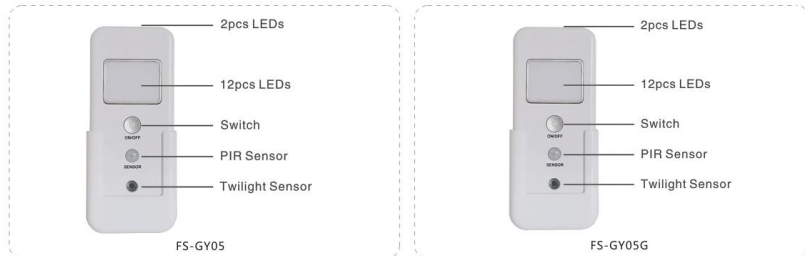
SQ-22004	SQ-22005	SQ-22006	SQ-22007	SQ-22008	SQ-22009
China	USA	Germany	Australia	Japan	European
AC220-240V/50Hz	AC110-120V/50/60Hz	AC220-240V/50Hz	AC220-240V/50Hz	AC100-120V/50/60Hz	AC220-240V/50Hz

* Country name represents the outlet type. Some models adapt to other area.

USB CHARGER NIGHT LIGHT



WIRELESS SENSOR NIGHT LIGHT



NIGHT LIGHT WITH ADAPTER



GY03



11 SHIQIONG

NIGHT LIGHT WITH ADAPTER

GY09



GY10

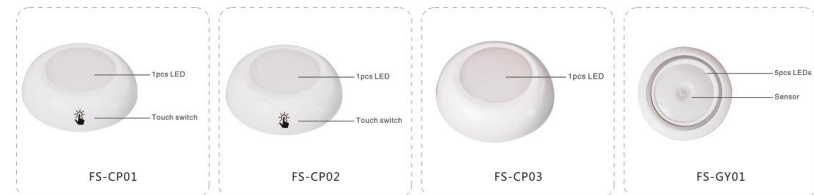


GY20



GY25

BATTERIES NIGHT LIGHT

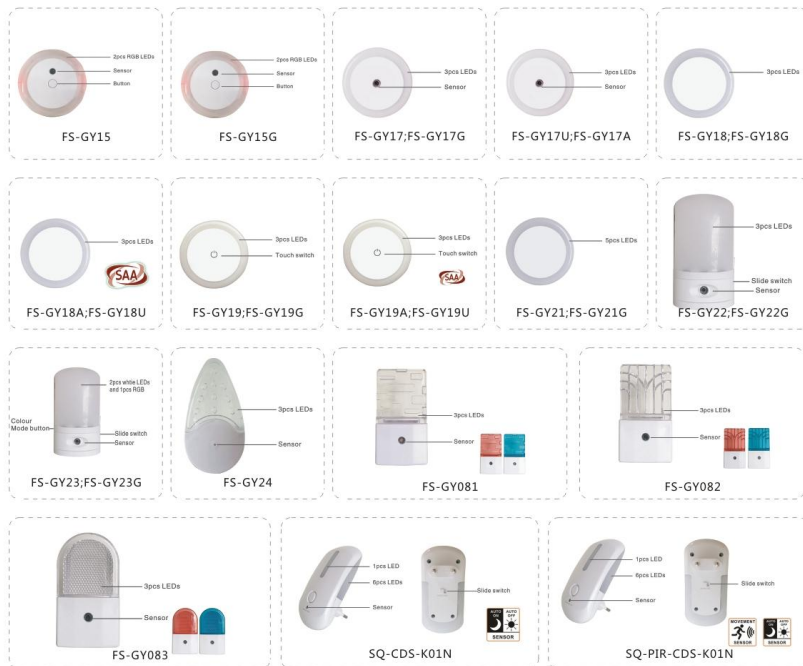


SHIQIONG 12

HOLIDAY TIMER



FASHION STYLE NIGHT LIGHT



CABINET SOCKET SERIES

Germany type



- O1: YG05-1U-G9-S1**
19" PDU socket, 9ways Germany type power strip, black, Aluminium Enclosure, cable: 3x1.5mm², with VDE plug
- O2: YG05-1U-G6-P1**
PDU 19" Germany strips, 1U, 8ways Germany type output sockets, with RCD switch, black, Aluminium Enclosure, cable: 3x1.5mm² with VDE plug
- O3: YG05-1U-G8-K1**
PDU 19" Germany strips, 1U, 8ways Germany type output sockets, black, with with Dual-pole switch, Aluminium Enclosure, cable: 3x1.5mm² with VDE plug;
- O4: YG05-1U-G6-K1G1**
PDU 19" Germany strips, 1U, 8ways Germany type output sockets, black, with with overload protection and dual-pole Switch, Aluminium Enclosure, cable: 3x1.5mm² with VDE plug;
- O5: YG05-1U-G8-S1S1**
PDU 19" Germany strips, 1U, 8ways Germany type output sockets, black, with with overload protection and indicator light, Aluminium Enclosure, cable: 3x1.5mm² x 2M Gross length with VDE plug;
- O6: YG05-1U-G6-R1**
PDU 19" Germany strips, 1.5U, 8ways Germany type power strip, black, with Surge protection and 3 indicator lights, Aluminium Enclosure, cable: 3x1.5mm² x 2M Gross length with VDE plug;

French type



- O9: YG05-1U-F6-V1**
PDU 19" French strips, 1U, 8ways French type output sockets, with 1pc air-breaker switch, black, Aluminium Enclosure, cable: 3x1.5mm² with VDE plug
- O10: YG05-1U-F8-K1**
PDU 19" French strips, 1U, 8ways French type output sockets, black, with Dual-pole switch, Aluminium Enclosure, cable: 3x1.5mm² with VDE plug
- O11: YG05-1U-F6-YA1**
PDU 19" French strips, 1.5U, 8ways French type output sockets, black, with 2p air-breaker switch, Aluminium Enclosure, cable: 3x1.5mm² with VDE plug
- O12: YG05-1U-F8**
PDU 19" French strips, 1U, 8ways French type output sockets, black, with Aluminium Enclosure, cable: 3x1.5mm² x with VDE plug
- O13: YG05-1U-F8-Q1**
PDU 19" French strips, 1U, 8ways French type output sockets, black, with overload protection Aluminium Enclosure, cable: 3x1.5mm² with VDE plug
- O14: YG05-1U-C7-Q1K1**
PDU 19", C13 strips, 1U, 7ways C13 output sockets, black, with overload protection and dual-pole Switch, Aluminium Enclosure, cable: 3x1.5mm² with VDE plug
- O15: YG05-1U-C7-R1**
PDU 19", C13 strips, 1.5U, 7ways C13 output sockets, black, with surge protection and 3 indicators, Aluminium Enclosure, cable: 3x1.5mm² with VDE plug
- O16: YG05-1U-C7-YA1**
PDU 19", C13 strips, 1.5U, 7ways C13 output sockets, black, with 2p air-breaker switch, Aluminium Enclosure, cable: 3x1.5mm² with C14 plug
- O17: YG05-1U-C6-V1**
PDU 19", C13 strips, 1U, 6ways C13 output sockets, black, with 1p air-breaker switch, Aluminium Enclosure, cable: 3x1.5mm² with C14 plug
- O18: YG05-1U-B1-C6**
PDU 19", C13 strips, 1.5U, 8ways C13 output sockets, black, one way C14 input, Aluminium Enclosure, without cable, if you need extension cable, we can offer as you want



O1



O2



O3



O4

GERMAN TYPE CABLE REELS

O1: XPO1-4D/XPO3-4D (25M/30M/40M/50M)
 German type cable reel,
 with children protection and IP44 waterproof
 Cable: H05RN/RR-F 3G1.0mm²,
 H05RN/RR-F 3G1.5mm²,
 H07RN-F 3G2.5mm²;

O2: HS-4ZR-25M/30M/40M/50M-DB4R
 German type cable reel,
 with children protection
 CABLE: H05VV-F 3G1.0mm²/1.5mm²

O3: HS-4ZR-50M-YDBO1 (25M/30M/40M/50M)
 German type extension cord cable reel
 CABLE: H05VV-F 3G1.0mm²/1.5mm²

O4: HS-4ZR-5M/10M/15M-DB4R
 German type cable reel,
 with children protection
 CABLE: H05VV-F 3G1.0mm²/1.5mm²

O5: HS-PO1
 Waterproof BOX IP44



O5



O1



O2



O3



O4

FRENCH TYPE CABLE REELS

O1: XPO1-4D/XPO3-4D (25M/30M/40M/50M)
 French type cable reel,
 with children protection and IP44 waterproof
 Cable: H05RN/RR-F 3G1.0mm²,
 H05RN/RR-F 3G1.5mm²,
 H07RN-F 3G2.5mm²;

O2: HS-4ZR-25M/30M/40M/50M-FB4R
 French type cable reel, with children protection
 CABLE: H05VV-F 3G1.0mm²/1.5mm²

O3: HS-4ZR-50M-YFBO1 (25M/30M/40M/50M)
 French type extension cord cable reel
 CABLE: H05VV-F 3G1.0mm²/1.5mm²

O4: HS-4ZR-5M/10M/15M-FB4R
 French type cable reel, with children protection
 CABLE: H05VV-F 3G1.0mm²/1.5mm²



China U.S.A. Japan	U.S.A.	Europe	Europe	Europe	Denmark	Switzerland	Italy	Britain	Britain	Australia	Australia	Israel

EXTENSION CORD ACCESSORIES

O1: EXTS-001
 Germany type Extension cord,
 VDE plug+ Computer plug
 Data: 3G0.75/1.0/1.5mm², 2M/3M/4/5/10M

O2: EXTS-002
 Germany type Extension cord,
 Computer plugs on both ends
 Data: 3G0.75/1.0/1.5mm², 2M/3M/4/5/10M

O3: EXTS-003
 Germany type Extension cord,
 VDE plug+ Computer plug
 Data: 3G0.75/1.0/1.5mm², 2M/3M/4/5/10M

O4: SY-11/SY-C2-O5 3M/5M/10M/20M/50M
 WATERPROOF Germany type Extension cord
 Cable: H05RN/RR-F 3G1.0mm²,
 H05RN/RR-F 3G1.5mm²,
 H07RN-F 3G2.5mm²;

O5: SQ/HS-YFBO1
 French type, extension cord
 Data: 3G0.75/1.0/1.5mm²,
 2M/3M/4/5/10M/20M/50M

O6: SQ/HS-YDBO1
 German type, extension cord
 Data: 3G1.0/1.5mm²,
 2M/3M/4/5/10M/20M/50M

O7: SQ/HS-YFBO2
 French type, extension cord
 Cable: 2 x 0.75mm², 2M/3M/5M/10M

O8: SQ/HS-YDBO5
 Germany type, extension cord
 Cable: 2 x 0.75mm², 2M/3M/5M/10M

O9: EXTS-004
 Extension cord, VDE Plug+ cable
 Data: 3G0.75/1.0/1.5mm², 2M/3M/4/5/10M/20M/50M

10: JM003+S
 Extension cord, with switch
 Data: 2 x 0.75mm²



O1

O2

O3



FRENCH TIMER

O1: TF-1
 24 hour programme timer.

O2: TFE-2
 Weekly electronic timer

O3: TF-4
 24 hour programme timer.



O1

O2

O3



GERMAN TIMER

O1: TG-14
 24 hour programme timer.

O2: TG-2A
 Weekly electronic timer

O3: TG-4
 24 hour programme timer